



THE TIMBERMEN, INC.

P.O. Box 107
Camak, Georgia 30807
Office: (706) 465-3506
Home: (706) 595-5599
Fax: (706) 465-3025
Mobile:(706) 214-0874/(706) 836-4755
<http://www.timbermen.net>

Registered Foresters, GA

Licensed Real Estate, GA

LAND FOR SALE!

Wasden Tract
204.49 Acres
Jefferson County, Georgia

Located 12 Miles Northwest of Louisville, Georgia. Road frontage on Bothwell Road for 1,000 feet. Duhart Creek & McQuaddy Branch surrounds Property. Excellent rural home site or Recreational/Hunting tract well located to Louisville, Wrens, and Augusta.

Acreage Summary

Planted Pine – 19 years old161 Acres
Food Plots & Hardwood Creek Bottom.....44 Acres

Timber is well above average in size, height, and quality!

Could provide immediate cash flow from timber assets!

Excellent Recreational or investment Tract!

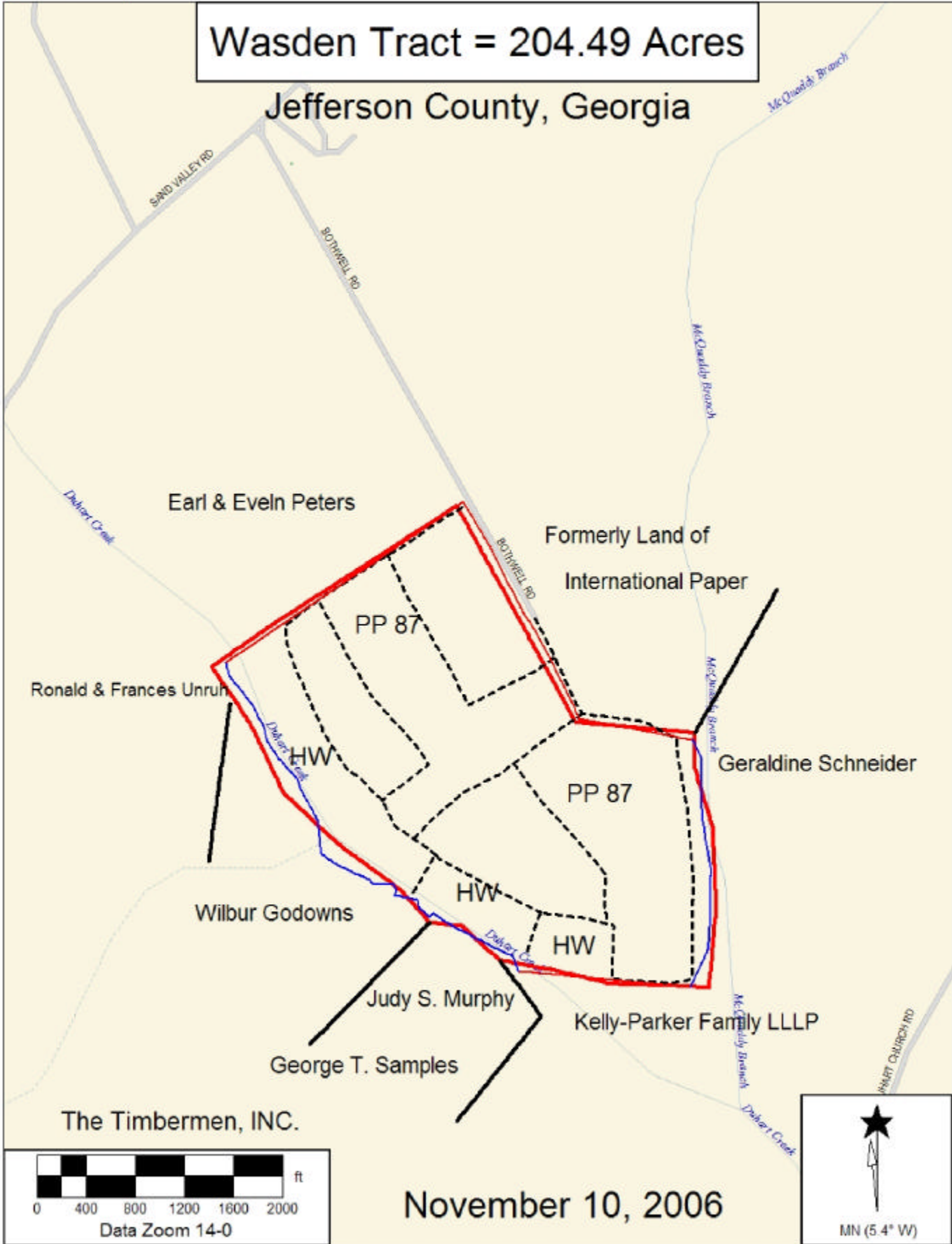
Purchase Price
\$613,470.00

For more information, go to <http://www.timbermen.net/landforsale> or call:

Patrick Lunceford: (706) 836-4755 (cell)

Wasden Tract = 204.49 Acres

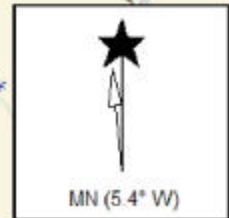
Jefferson County, Georgia



The Timbermen, INC.



November 10, 2006



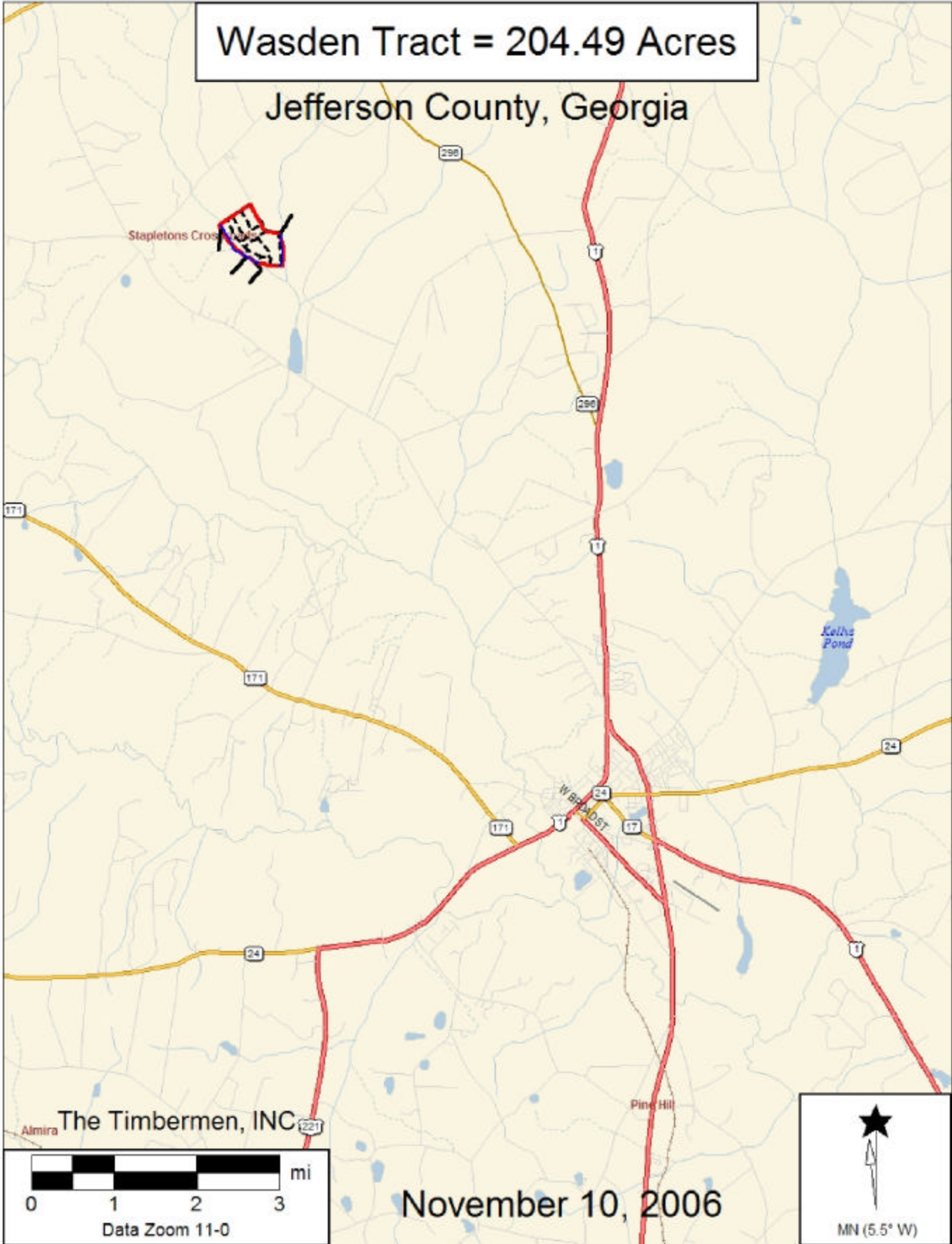
Data use subject to license.

© 2004 DeLorme. XMap®/GIS Editor.

www.delorme.com

Wasden Tract = 204.49 Acres

Jefferson County, Georgia



Data use subject to license.

© 2004 DeLorme. XMap®/GIS Editor.

www.delorme.com